



# ALBATROSS FILTRATION SYSTEMS LTD

www.albatrossfiltrationsystems.co.uk

## OWNER'S MANUAL

Model: FS101

✉ support@albatrossfiltrationsystems.co.uk

🌐 www.albatrossfiltrationsystems.co.uk



# CONTENT

1. BEFORE INSTALLATION .....	1
2. PRODUCT INTRODUCTION .....	2
3. SAMPLE CONNECTION .....	3
4. INSTALLATION TIPS .....	3
5. INSTALLATION STEPS .....	4
6. FILTER REPLACEMENT INSTRUCTION .....	5
7. TROUBLE SHOOTING .....	6

**Certified by IAPMO R&T according to NSF/ANSI 42 & 53 for material safety, Structural Integrity, Chlorine, Particulate Class I, Lead and Cyst remove.**



Thank you for purchasing FS101 undersink water filter system with 0.5 micron composite carbon block filter. If you have any questions or need any assistance, please contact: **[www.albatrossfiltrationsystems.co.uk](http://www.albatrossfiltrationsystems.co.uk)**

# 1. Before Installation

## ■ Inspect Box

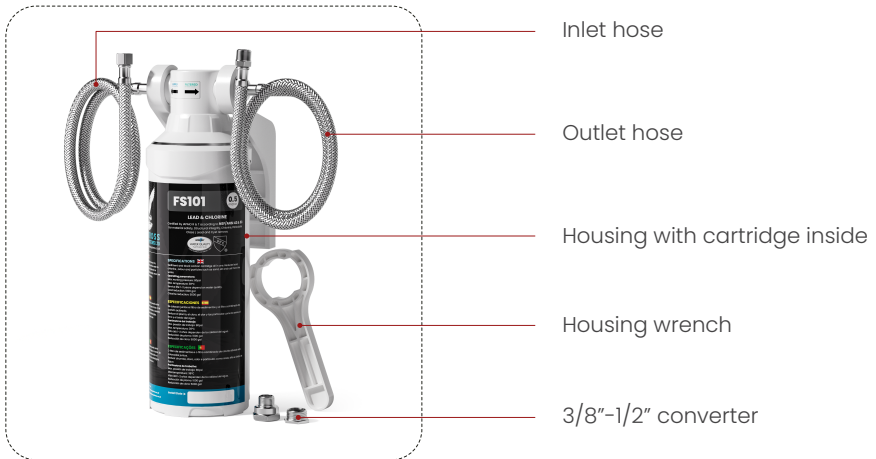
Open the box and take out the system and all the components. Inspect them carefully according to "Product Introduction" and make sure nothing is missing or damaged during shipping. If any parts are cracked or broken, please do not proceed with the installation and contact us for an exchange or diagnosis.

## ■ Technical Data

<b>Model Name</b>	FS101	<b>Replacement Filter</b>	FW-1
<b>Dimension</b>	5 x 5 x 13.5 inches	<b>Replacement Period</b>	8-12 months
<b>Flow Rate</b>	2 Gallons Per Minute		
<b>Applicable Water Source</b>	Municipal Water		
<b>Operating Temp.</b>	Min.39°F , Max.100°F		
<b>Working pressure</b>	Min. 20 psi, Max. 80 psi		

Rated flow 2 gallons/m @25 C (77 F). Low water temperature will slow down water flow. Please contact us for reference at: **[www.albatrossfiltrationsystems.co.uk](http://www.albatrossfiltrationsystems.co.uk)**

## 2. PRODUCT INTRODUCTION

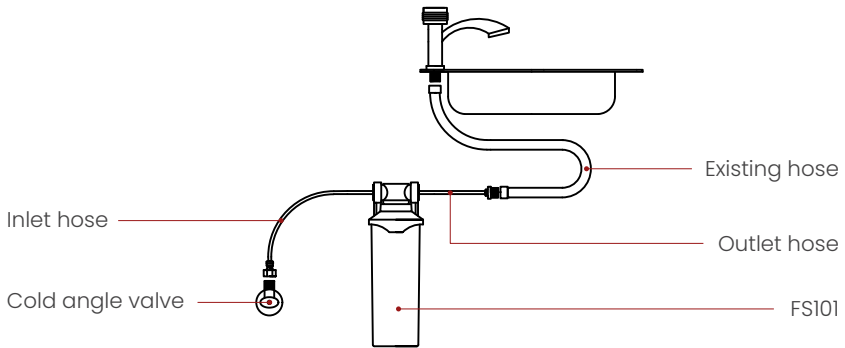


### ■ Precautions

1. Please flush water for 10 minutes before use.
2. The spent adsorption media will not be regenerated and used.
3. Systems certified for cyst reduction may be used on disinfected waters that may contain filterable cysts
4. Do not use with water that is micro biologically unsafe or of unknown quality without adequate disinfection before or after the system.
5. Testing was performed under standard laboratory conditions, actual performance may vary.
6. For cold water use only.
7. This filter must be protected from freezing, which can cause cracking of the filter and water leakage.
8. Do not allow children under 3 years of age to have access to small parts during the installation of this product.
9. This installation must comply with all applicable state and local regulations.
10. Do not use this system on water containing greater than 10 mg/L nitrate nitrogen without pretreatment to remove the nitrate. The water supply must be analyzed for nitrate nitrogen and nitrite nitrogen before the installation of the system. Failure to observe these instructions could produce water that exceeds the drinking water standard for nitrate;
11. Do not use this system on water containing hardness greater than 50 mg/L (3 grains per gallon) without pretreatment to remove hardness.



### 3. SAMPLE CONNECTION



#### Note:

Mount the water filter at least 4 inch lower than the bottom of the basin for easier installation

### 4. INSTALLATION TIPS

#### IF ANGLE VALVE OUTLET IS 1/2"



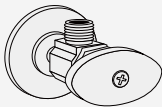
1/2" thread

#### IF ANGLE VALVE OUTLET IS 3/8"

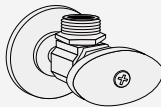


3/8" thread

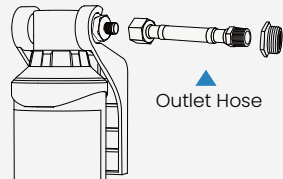
#### CONNECT ONE PART OF THE CONVERTER TO THE ANGLE VALVE



3/8" thread



3/8" to 1/2"



Outlet Hose

Outlet Port ► 1/2" to 3/8"

## 5. INSTALLATION STEPS

### STEP 1: CONNECT THE FILTER SYSTEM



Mount bracket



Fasten screws



Load Rubber Oring



Load Rubber Oring



Connect inlet hose



Connect outlet hose



Mount filter head



Mount filter system

### STEP 2: CONNECT THE WATER SUPPLY (COLD WATER ONLY)



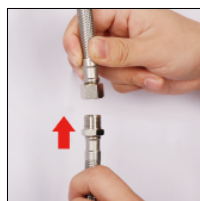
Shut off water supply



Remove original hose



Connect inlet hose



Connect outlet hose



Connection finish



Turn on the valve

### STEP 3: CHECK FOR LEAKS AND FLUSH THE FILTER



1. Turn on the water supply to check for leaks
2. Flush the filter for 5 minutes before use

## 6. FILTER REPLACEMENT INSTRUCTIONS

**STEP 1:** Twist the housing anti-clockwise;

**STEP 2:** Using wrench to unscrew the housing body;

**STEP 3:** Take out the old cartridge and load with new one, then install back in the same way.



#### Note:

With the AUTO Shut off design of the system, you don't need to shut off the water supply when doing the replacement.

#### Warning:

Please keep the wrench always

## 7. TROUBLE SHOOTING

### 1. Leaks at the threaded connection:

If once the system leaks after installation, please use plumber tapes properly on the threaded fitting to prevent leakage.

### 2. PPM is not dropping while tested by TDS meter:

FS101 has a unique technology that removes 99.99% of contaminants while leaving all the essential minerals in water such as Calcium, Potassium, Sodium, Magnesium ect. All healthy water has a certain level of total dissolved solids. They are essential minerals. The TDS meters are not an effective way to measure the water quality, The water without TDS is normally produced by reverse osmosis system.

## ■ PERFORMANCE DATA

Substance	Influent challenge concentration (mg/L)	Maximum permissible product water concentration (mg/L)
Chlorine	2.0 mg/L $\pm$ 10%	$\geq$ 50%
Particulate, Class I Particles 0.5 to $<1\mu\text{m}$	At least 10,000 particles/mL	$\geq$ 85%
Lead	0.15 $\pm$ 10%	0.010
Cyst	Min. 50,000/L	99.95%